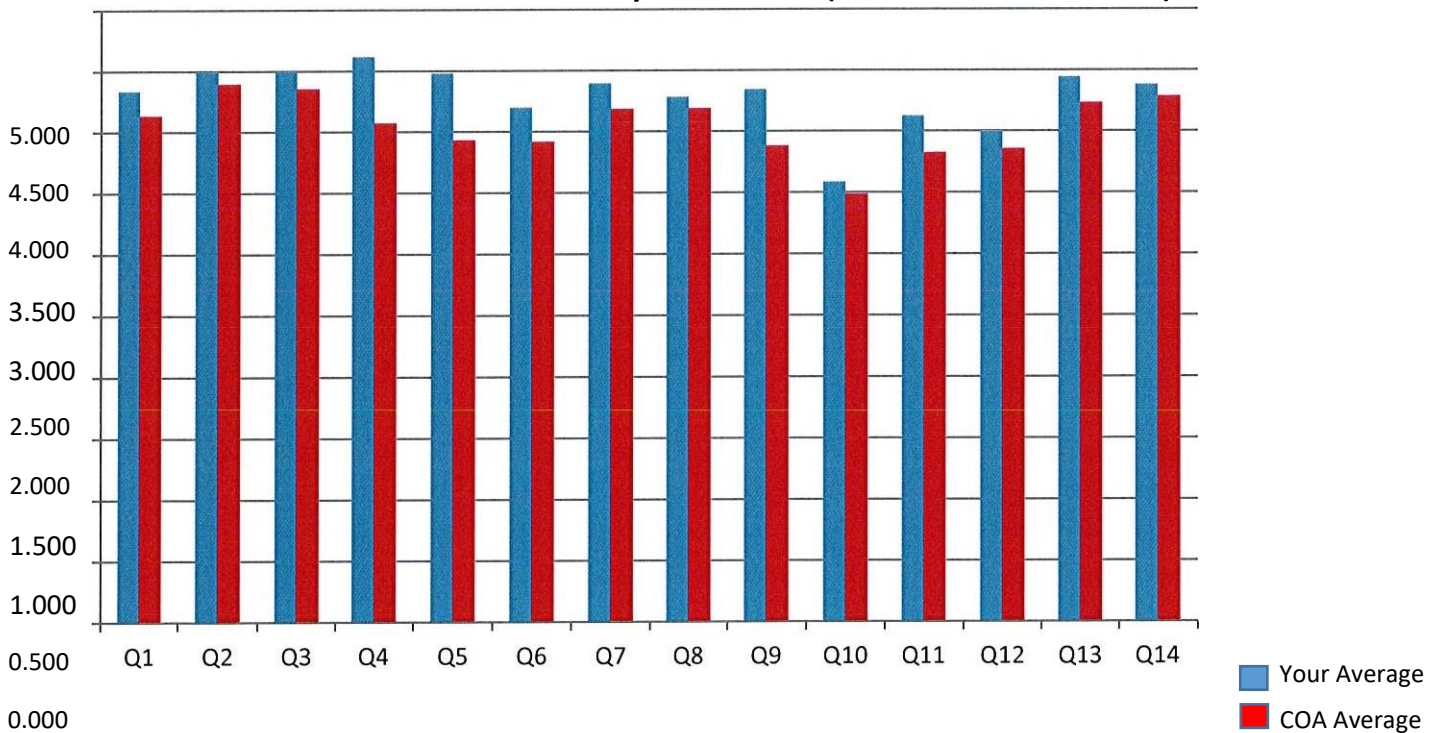


Personnel Survey (page 1 of 2)

Number of Surveys Sent	97	Overall Average	4.302	5.705%
Number of Surveys Received	57	COA Overall Average	4.056	

Q#	Text	Your Average	COA Average	% Change
Q1	My job responsibilities are clearly outlined in my job description.	4.339	4.137	4.898%
Q2	I received an orientation within the first three months of beginning work with the organization.	4.500	4.397	2.350%
Q3	I have an up-to-date copy of, or can access the personnel handbook.	4.500	4.357	3.289%
Q4	I am aware of the organization's grievance procedures and know how to make a complaint.	4.618	4.077	13.267%
	I am notified when positions that I may be qualified for become available within the organization.	4.482	3.936	13.879%
Q6	I can access my personnel record.	4.204	3.922	7.195%
	I receive annual performance evaluations.	4.400	4.187	5.082%
Q8	I receive regular supervision.	4.286	4.193	2.219%
Q9	At least annually, employee satisfaction is assessed by the organization.	4.345	3.886	11.830%
Q10	The organization implements changes based on the feedback received from personnel.	3.589	3.491	2.829%
Q11	I participate in quality improvement activities within the organization.	4.130	3.827	7.908%
Q12	I receive information on program outcomes that is useful to me in working with persons served.		3.860	3.624%
Q13	I have participated in on the job activities that enhanced my knowledge and skills.	4.446	4.234	5.013%
Q14	Case records of persons that I serve are readily available or accessible to me.	4.385	4.286	2.290%

Personnel Survey Results (Scale Questions)



Personnel Survey (page 2 of 2)

Number of Surveys Sent 97
 Number of Surveys Received 57

12 Yes No

Text	Yes	No	N/A	N/A
Q15 Are you aware of the organization's harassment policy?	12	12		54
Q16 Are you aware of the organization's discrimination prohibition policy?				53
Q17 Are you aware of the organization's policy regarding prohibition of corporal and degrading punishment of consumers?				37
Q18 Are you aware of the organization's confidentiality policy?				56

Personnel Survey Results (Yes/No Questions)

